

TYPE BLOW-OFF

SPECIAL PURPOSE

DELAVAN
Spray Technologies



SPRAY CHARACTERISTICS

- Directs compressed air or steam in a wide, thin air sheet.
- Designed with a relatively large slotted orifice.

CONSTRUCTION AND MATERIALS

- Available in Brass and Stainless Steel (recommended for steam applications).
- 3 piece construction, body, tip and cap.
- The tip has two flats to facilitate alignment.
- Optional body is available in a variety of threads.
- Thread sizes are Male BSPT and Female BSPP.
- Other materials available to special order.

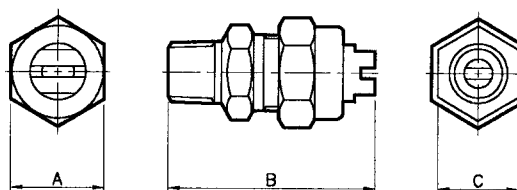
ORDER EXAMPLE

No. 4 Blow-Off Brass = Tip Only.

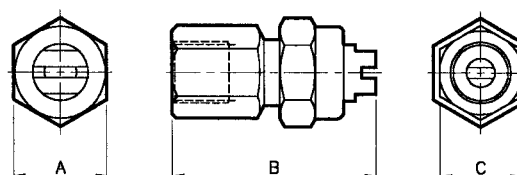
1/4" Male No. 3 Blow-Off Stainless Steel = Complete Assembly.

DIMENSIONS AND WEIGHTS

Thread Type	Assembly Type	Dimensions (mm)			Weight (g)
		A Hex	B	C Hex	
1/8	Female	20,8	46,0	18,0	69
1/4	Male	20,8	46,0	18,0	61
1/4	Female	20,8	46,0	18,0	68
3/8	Male	20,8	46,0	18,0	63
3/8	Female	20,8	46,0	20,8	69



BLOW-OFF (MALE) ASSEMBLY



BLOW-OFF (FEMALE) ASSEMBLY

Maximum Recommended
Pressure: 14 Bar.G.

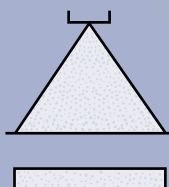
AIR CAPACITY CHART

NOZZLE NUMBER	AIR FLOW IN M ³ /HOUR AT Bar.G.				APPROX. SPRAY ANGLES (°)
	0,7	2	4	7	
No. 1	1,1	2,4	4	6,4	75°
No. 2	2,1	4,6	7,5	11,6	55°
No. 3	6,2	12,2	19,5	28,4	60°
No. 4	10,0	20,1	32,3	47,6	100°
No. 5	22,4	46,7	72,2	105,5	60°

STEAM CAPACITY CHART

NOZZLE NUMBER	STEAM FLOW IN Kg/HOUR AT Bar.G.				APPROX. SPRAY ANGLES (°)
	0,7	2	4	7	
No. 1	0,54	1,27	2,08	3,72	75°
No. 2	1,27	2,35	4,08	7,26	55°
No. 3	3,5	6,12	10,3	17,2	60°
No. 4	5,76	10,2	17,2	29,3	100°
No. 5	12,7	22,9	38,6	64,9	60°

Contact our Helpline for
any special requirements:
Tel: +44 (0) 151 424 6821
Fax: +44 (0) 151 495 1043
e-mail: sales@delavan.co.uk
Web: www.delavan.co.uk





SPRAY CHARACTERISTICS

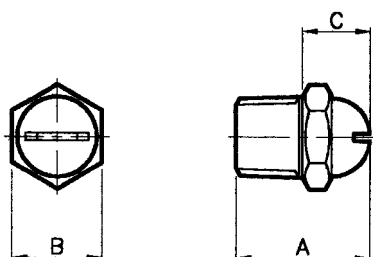
- Wide flat spray of liquid with even distribution except for the edges which have heavier deposit.
- Wide spray angles, on water, for low pressure.
- Useful with steam or air for blow-off application.

CONSTRUCTION AND MATERIALS

- Straight through slot shaped orifice.
- One piece Male BSPT thread only.
- Hexagon body with wrench flats avoid distortion when tightening.
- Larger thread sizes are available on request.
- Brass and Stainless Steel are standard.
- Other materials available to special order.

ORDER EXAMPLE

1/4" DJ 24 Brass.



DIMENSIONS AND WEIGHTS

Thread Size	A	Dimensions (mm) B Hex	C	Weight (g)
1/4	30,0	15,3	10,3	28
3/8	35,0	18,0	14,3	45

Maximum Recommended Pressure:
70 Bar.G. (Metal) 7 Bar.G. (Plastic)

WATER CAPACITY CHART

NOZZLE NUMBER MALE	APPROX SLOT WIDTH (mm)	BSPT THREAD SIZE		FLOW RATE IN LITRE/MIN AT Bar.G.							SPRAY ANGLES (°) AT Bar.G.		
		1/4	3/8	0,7	1	2	3	4	5	7	1	3	7
DJ 10	0,25			1,1	1,4	1,7	2,1	2,4	2,7	3,2	85	100	105
DJ 14	0,35			1,2	1,5	2,0	2,3	2,6	3,0	3,5	85	100	105
DJ 18	0,45			1,6	1,9	2,6	3,0	3,4	3,8	4,5	75	90	95
DJ 24	0,60			2,1	2,5	3,5	4,0	4,6	5,1	6,0	90	90	100
DJ 31	0,80			2,7	3,2	4,5	5,2	5,9	6,6	7,8	80	90	100
DJ 40	1,00			3,7	4,3	6,0	8,8	10,1	11,3	13,3	90	95	110
DJ 46	1,20			4,2	5,0	6,9	10,1	11,6	13,0	15,3	95	110	115
DJ 93	2,40			12,4	14,9	20	26	31	35	41	80	85	90

AIR CAPACITY CHART

NOZZLE NUMBER MALE	APPROX SLOT WIDTH (mm)	BSPT THREAD SIZE		FLOW RATE IN LITRE/MIN AT Bar.G.							SPRAY ANGLES (°) AT Bar.G.		
		1/4	3/8	0,7	1	2	3	4	5	7	1	3	7
DJ 10	0,25			35	46	56	69	78	88	105	80	95	100
DJ 14	0,35			39	49	65	75	85	98	114	80	95	100
DJ 18	0,45			52	62	85	98	111	124	147	70	85	90
DJ 24	0,60			69	82	114	131	150	167	196	75	85	95
DJ 31	0,80			88	105	147	170	193	216	255	75	85	100
DJ 40	1,00			121	141	196	288	330	370	435	85	90	105
DJ 46	1,20			137	164	226	330	379	425	500	90	105	110
DJM 93	2,40			405	487	654	850	101	1145	1341	75	80	85

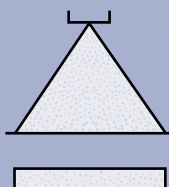
STEAM CAPACITY CHART

NOZZLE NUMBER MALE	APPROX SLOT WIDTH (mm)	BSPT THREAD SIZE		FLOW RATE IN Kg/HOUR AT Bar.G.							SPRAY ANGLES (°) AT Bar.G.		
		1/4	3/8	0,7	1	2	3	4	5	7	1	3	7
DJ 10	0,25			1,3	1,7	2,0	2,5	2,9	3,2	3,8	80	95	100
DJ 14	0,35			1,4	1,8	2,4	2,8	3,1	3,6	4,2	80	95	100
DJ 18	0,45			1,9	2,3	3,1	3,6	4,1	4,6	5,4	70	85	90
DJ 24	0,60			2,5	3,0	4,2	4,8	5,5	6,1	7,2	75	85	95
DJ 31	0,80			3,2	3,8	5,4	6,2	7,1	7,9	9,3	75	85	100
DJ 40	1,00			4,4	5,2	7,2	10,5	12,1	13,5	15,9	85	90	115
DJ 46	1,20			5,0	6,0	8,3	12,1	13,9	15,6	18,3	90	105	110
DJ 93	2,40			14,9	17,8	24,0	31,0	37,0	42,0	49,0	75	80	85

TYPE DJ

SPECIAL PURPOSE

Contact our Helpline for any special requirements:
Tel: +44 (0) 151 424 6821
Fax: +44 (0) 151 495 1043
e-mail: sales@delavan.co.uk
Web: www.delavan.co.uk



SPRAY CHARACTERISTICS

- Wide flat spray of liquid with even distribution except for the edges which have heavier deposit.
- Wide spray angles with water, at low pressure.
- Useful with steam or air for blow-off application.

CONSTRUCTION AND MATERIALS

- Straight through slot shaped orifice.
- 3 piece construction, body, tip and cap nut.
- The tip has two flats to facilitate alignment.
- Optional body is available in a variety of threads.
- Thread sizes are Male BSPT and Female BSPP.
- Brass and Stainless Steel are standard.
- Other materials available to special order.

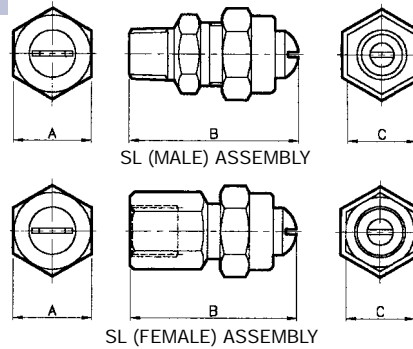
ORDER EXAMPLE

SL 40 Stainless Steel = Tip Only.

1/4" SLF (Female) 18 Brass = Complete Assembly.

DIMENSIONS AND WEIGHTS

Thread Size	Assembly Type	Dimensions (mm)			Weight (g)
		A Hex	B	C Hex	
1/8	SLF	20,8	46,0	18,0	69
1/4	SLM	20,8	46,0	18,0	61
1/4	SLF	20,8	46,0	18,0	68
3/8	SLM	20,8	46,0	18,0	63
3/8	SLF	20,8	46,0	20,8	69



Maximum Recommended Pressure: 70 Bar.G.

WATER CAPACITY CHART

NOZZLE NUMBER	APPROX SLOT WIDTH (mm)	RECOMMENDED THREAD SIZE			FLOW RATE IN LITRE/MIN AT Bar.G.								SPRAY ANGLES (°) AT Bar.G.		
		1/8	1/4	3/8	0,7	1	2	3	4	5	7	1	3	7	
SL 10	0,25				1,1	1,4	1,7	2,1	2,4	2,7	3,2	85	100	105	
SL 14	0,35				1,2	1,5	2,0	2,3	2,6	3,0	3,5	85	100	105	
SL 18	0,45				1,6	1,9	2,6	3,0	3,4	3,8	4,5	75	90	95	
SL 24	0,60				2,1	2,5	3,5	4,0	4,6	5,1	6,0	90	90	100	
SL 31	0,80				2,7	3,2	4,5	5,2	5,9	6,6	7,8	80	90	100	
SL 40	1,00				3,7	4,3	6,0	8,8	10,1	11,3	13,3	90	95	110	
SL 46	1,20				4,2	5,0	6,9	10,1	11,6	13,0	15,3	95	110	115	
SL 93	2,40				12,4	14,9	20	26	31	35	41	80	85	90	

AIR CAPACITY CHART

NOZZLE NUMBER	APPROX SLOT WIDTH (mm)	RECOMMENDED THREAD SIZE			FLOW RATE IN LITRE/MIN AT Bar.G.								SPRAY ANGLES (°) AT Bar.G.		
		1/8	1/4	3/8	0,7	1	2	3	4	5	7	1	3	7	
SL 10	0,25				35	46	56	69	78	88	105	80	95	100	
SL 14	0,35				39	49	65	75	85	98	114	80	95	100	
SL 18	0,45				52	62	85	98	111	124	147	70	85	90	
SL 24	0,60				69	82	114	131	150	167	196	75	85	95	
SL 31	0,80				88	105	147	170	193	216	255	75	85	100	
SL 40	1,00				121	141	196	288	330	370	435	85	90	105	
SL 46	1,20				137	164	226	330	379	425	500	90	105	110	
SL 93	2,40				405	487	654	850	101	1145	1341	75	80	85	

STEAM CAPACITY CHART

NOZZLE NUMBER	APPROX SLOT WIDTH (mm)	RECOMMENDED THREAD SIZE			FLOW RATE IN Kg/HOUR AT Bar.G.								SPRAY ANGLES (°) AT Bar.G.		
		1/8	1/4	3/8	0,7	1	2	3	4	5	7	1	3	7	
SL 10	0,25				1,3	1,7	2,0	2,5	2,9	3,2	3,8	80	95	100	
SL 14	0,35				1,4	1,8	2,4	2,8	3,1	3,6	4,2	80	95	100	
SL 18	0,45				1,9	2,3	3,1	3,6	4,1	4,6	5,4	70	85	90	
SL 24	0,60				2,5	3,0	4,2	4,8	5,5	6,1	7,2	75	85	95	
SL 31	0,80				3,2	3,8	5,4	6,2	7,1	7,9	9,3	75	85	100	
SL 40	1,00				4,4	5,2	7,2	10,5	12,1	13,5	15,9	85	90	115	
SL 46	1,20				5,0	6,0	8,3	12,1	13,9	15,6	18,3	90	105	110	
SL 93	2,40				14,9	17,8	24,0	31,0	37,0	42,0	49,0	75	80	85	

SPECIAL PURPOSE

TYPE SL

Contact our Helpline for any special requirements:
Tel: +44 (0) 151 424 6821
Fax: +44 (0) 151 495 1043
e-mail: sales@delavan.co.uk
Web: www.delavan.co.uk

