

## SPRAY CHARACTERISTICS

- Highly uniform and stable distribution across the complete spray pattern with a knife-like cutting edge.
- Maximum impinging force produced with a minimum loss of energy resulting in higher efficiency.
- Spray patterns do not require overlapping.
- Nominal spray angles of 25° and 32°.

## CONSTRUCTION AND MATERIALS

- Available in type 440 Hardened Stainless Steel.
- One piece construction and with 3/8" Male NPT thread

## ORDER EXAMPLE

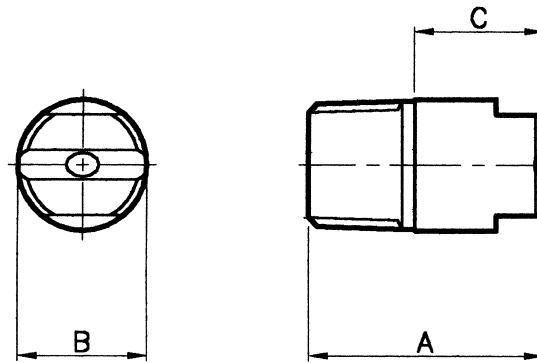
Nozzle Number 343-15.



### DIMENSIONS AND WEIGHTS

Nozzle	Dimensions (mm)			Weight (g)
	A	B	C	
343	31,8	17,5	17,4	35

Nozzle Height (mm)	Coverage (mm) at 70 Bar.G.	
	25°	32°
200	127	152
225	146	165
250	156	181
275	168	194
300	181	210
325	188	222
350	200	238
400	222	264
450	245	289
500	260	305
550	273	318
600	286	324



Maximum Recommended Pressure: 275 Bar.G.

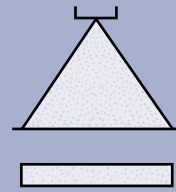
## CAPACITY CHART

NOZZLE NUMBER	Equiv. Orif. Dia. (mm)	FLOW RATE IN LITRES/MIN AT Bar.G.																
		25°	32°	40	55	70	85	100	110	125	140	150	165	180	195	210	240	275
343-1 343-10	2,0	14,5	17,0	19,0	21,0	22,7	23,8	25,5	27,0	27,9	29,0	30,7	32,0	33,2	35,5	37,8		
343-3 343-12	2,8	28,7	33,7	38,2	42,2	45,5	47,7	51,0	53,8	55,7	58,6	61,0	63,6	66,0	70,6	75,6		
343-5 343-14	3,6	43,2	50,7	57,2	63,0	68,2	71,9	76,0	80,0	82,9	87,0	91,0	95,2	99,2	106	113		
343-6 343-15	4,0	57,7	67,8	76,3	84,5	92,5	94,6	103	107	113	117	121	126	134	140	151		
343-7 343-16	4,4	72,3	83,2	95,4	104	116	121	129	134	139	148	152	160	164	178	189		
343-8 343-17	4,8	85,7	102	114	127	135	144	152	160	166	174	182	190	198	212	227		

HIGH PRESSURE

TYPE 343

Contact our Helpline for any special requirements:  
Tel: +44 (0) 151 424 6821  
Fax: +44 (0) 151 495 1043  
e-mail: sales@delavan.co.uk  
Web: www.delavan.co.uk





### SPRAY CHARACTERISTICS

- Highly uniform and stable distribution across the complete spray pattern with a knife-like cutting edge.
- Maximum impinging force produced with a minimum loss of energy resulting in higher efficiency.
- Tapered ends of the spray pattern make this the best suited to systems set up for overlapping spray patterns.
- Nominal spray angles of 25° and 32°.

### CONSTRUCTION AND MATERIALS

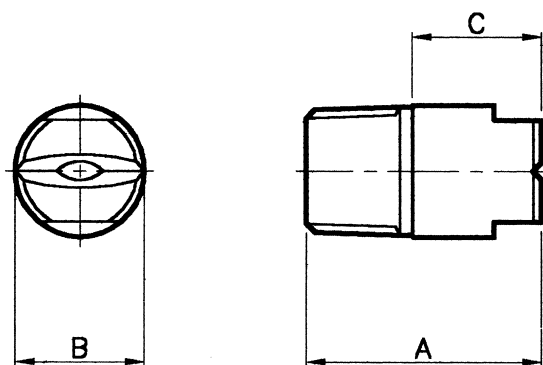
- Available in type 440 Hardened Stainless Steel.
- One piece construction and with 3/8" Male NPT thread

### ORDER EXAMPLE

Nozzle Number 344 - 6.

### DIMENSIONS AND WEIGHTS

Nozzle	Dimensions (mm)			Weight (g)
	A	B	C	
344	31,8	17,5	17,4	35



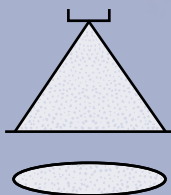
Nozzle Height (mm)	Coverage (mm) at 70 Bar.G.	
	25°	32°
200	76	99
225	89	111
250	102	124
275	114	137
300	127	149
325	133	159
350	143	172
400	162	191
450	175	213
500	191	232
550	207	251
600	222	270

Maximum Recommended Pressure: 275 Bar.G.

### CAPACITY CHART

NOZZLE NUMBER	Equiv. Orif. Dia. (mm)	FLOW RATE IN LITRES/MIN AT Bar.G.																
		SPRAY ANGLE		40	55	70	85	100	110	125	140	150	165	180	190	200	245	275
		25°	32°															
344-3 344-12	2,8			28,7	33,7	38,2	42,2	45,5	47,7	51,0	53,8	55,7	58,6	61,0	63,6	66,0	70,6	75,6
344-5 344-14	3,6			43,2	50,7	57,2	63,0	68,2	71,9	76,0	80,0	82,9	87,0	91,0	95,2	99,2	106	113
344-6 344-15	4,0			57,7	67,8	76,3	84,5	92,5	94,6	103	107	113	117	121	126	134	140	151
344-7 344-16	4,4			72,3	83,2	95,4	104	116	121	129	134	139	148	152	160	164	178	189
344-8 344-17	4,8			85,7	102	114	127	135	144	152	160	166	174	182	190	198	212	227

Contact our Helpline for any special requirements:  
Tel: +44 (0) 151 424 6821  
Fax: +44 (0) 151 495 1043  
e-mail:sales@delavan.co.uk  
Web:www.delavan.co.uk





### SPRAY CHARACTERISTICS

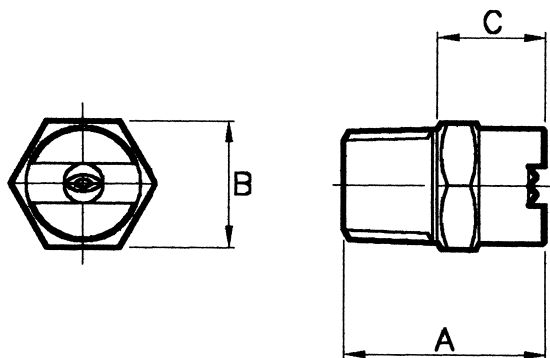
- Produces a uniform flat fan shaped pattern.
- Requires minimal overlapping to produce an even distribution when used in multiple nozzle system.
- High pressure body design with replaceable insert.
- A wide range of flow rates and spray angles.
- 0° nozzle sizes available on request.

### CONSTRUCTION AND MATERIALS

- 3 piece construction. Body, insert and retaining screw.
- The orifice insert is manufactured in Tungsten Carbide for maximum wear resistance at higher pressures.
- The insert is recessed for protection.
- The high pressure body and retaining screw are manufactured in Stainless Steel as standard.
- Standard thread is 1/4" Male BSPT.
- Special bodies can be made to order.

### ORDER EXAMPLE

1/4" AQ 4-65°.



### DIMENSIONS AND WEIGHTS

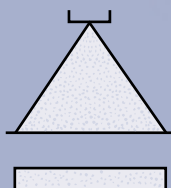
Thread Size	Dimensions (mm)			Weight (g)
	A	B	C	
1/4"	24,5	15,3	13,0	26

Maximum Recommended Pressure: 350 Bar.G.

### CAPACITY CHART

NOZZLE NUMBER	Equiv. orifice size (mm)	FLOW RATE IN LITRES/MIN AT Bar.G.								SPRAY ANGLES (°) @ 70 Bar.G.					
		35	50	70	100	140	210	280	350	25	40	50	65	80	95
AQ 0,5	0,45	0,68	0,81	0,94	1,14	1,36	1,66	1,92	2,15						
AQ 0,6	0,51	0,75	0,89	1,06	1,26	1,51	1,84	2,13	2,38						
AQ 0,7	0,53	0,90	1,07	1,25	1,52	1,78	2,18	2,51	2,81						
AQ 0,8	0,61	1,14	1,36	1,59	1,92	2,27	2,78	3,21	3,59						
AQ 1,0	0,66	1,32	1,57	1,89	2,23	2,63	3,22	3,71	4,15						
AQ 1,25	0,74	1,70	2,03	2,38	2,87	3,39	4,15	4,79	5,36						
AQ 1,5	0,79	2,00	2,39	2,83	3,38	3,97	4,86	5,61	6,27						
AQ 2,0	0,91	2,68	3,20	3,78	4,53	5,29	6,47	7,48	8,36						
AQ 2,5	1,04	3,33	3,98	4,54	5,62	6,62	8,10	9,36	10,4						
AQ 3,0	1,09	4,16	4,97	5,67	7,03	7,94	9,72	11,2	12,5						
AQ 3,5	1,22	4,54	5,42	6,44	7,67	9,46	11,5	13,3	14,9						
AQ 4,0	1,32	5,30	6,33	7,57	8,95	10,5	12,8	14,8	16,6						
AQ 6,0	1,57	7,95	9,50	11,3	13,4	15,8	19,3	22,3	24,9						
AQ 8,0	1,83	10,6	12,6	15,1	17,9	21,1	25,8	36,4	33,3						
AQ 11,5	2,16	15,5	18,5	21,6	26,2	30,6	37,4	43,2	48,3						

Contact our Helpline for any special requirements:  
Tel: +44 (0) 151 424 6821  
Fax: +44 (0) 151 495 1043  
e-mail:sales@delavan.co.uk  
Web:www.delavan.co.uk



## SPRAY CHARACTERISTICS

- Uniform distribution of hard hitting flat spray with a minimum of atomization.
- No soft edges - no need for overlapping.
- Minimum flow deviation at varying pressures.
- Available spray angles of 0°, 15°, 25°, 40° and 50° @ 10 Bar.G.

## CONSTRUCTION AND MATERIALS

- One piece construction with no internal shoulders or ledges causing unwanted liquid turbulence.
- Available with Male BSPT pipe thread design only.
- Hexagon body with wrench flats avoid distortion when tightening.
- Circular shaped orifice reduces wear, no feather edges
- Nozzle filter is not needed, orifice will pass small amounts of foreign matter.
- Manufactured in Stainless Steel and Hardened Stainless Steel as standard.
- Other materials available to special order.

## ORDER EXAMPLE

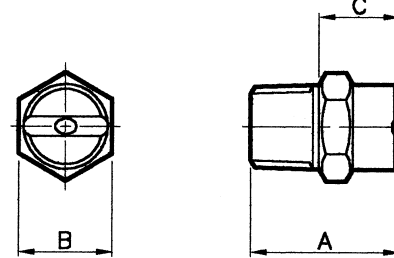
1/4" AZ 6-15° Stainless Steel.



AZ STAINLESS STEEL



AZ HARDENED STAINLESS STEEL



Maximum Recommended Pressure: 150 Bar.G.

### DIMENSIONS AND WEIGHTS

Thread Size	Nozzle Type	Dimensions (mm)			Weight (g)
		A	B Hex	C	
1/8	AZ	17,5	11,3	9,5	12
1/4	AZ	24,5	15,3	13,0	23
1/4	AZ (HSS)	22,2	15,3	12,0	19

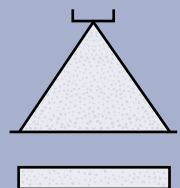
## CAPACITY CHART

NOZZLE NUMBER	EQUIV ORIFICE DIA. (mm)	BSPT THREAD SIZE		FLOW RATE IN LITRES/MIN AT Bar.G.							
		1/8	1/4	15	20	25	35	40	50	60	70
AZ 4	1,25			3,5	4,1	4,6	5,4	5,8	6,5	7,1	7,6
AZ 4,5	1,30			4,0	4,6	5,1	6,1	6,5	7,3	8,0	8,6
AZ 5	1,40			4,4	5,1	5,7	6,7	7,2	8,1	8,8	9,5
AZ 5,5	1,45			4,9	5,6	6,3	7,4	7,9	8,9	9,7	10,5
AZ 6	1,50			5,3	6,1	6,8	8,1	8,7	9,7	10,6	11,4
AZ 6,5	1,60			5,7	6,6	7,4	8,8	9,4	10,5	11,5	12,4
AZ 7	1,65			6,2	7,1	8,0	9,4	10,1	11,3	12,4	13,4
AZ 7,5	1,70			6,6	7,6	8,6	10,1	10,8	12,1	13,2	14,3
AZ 8	1,75			7,1	8,2	9,1	10,8	11,5	12,9	14,1	15,3
AZ 8,5	1,8			7,5	8,7	9,7	11,5	12,3	13,7	15,0	16,2
AZ 9	1,9			8,0	9,2	10,3	12,1	13,0	14,5	16,0	17,2
AZ 10	2,0			8,8	10,2	11,4	13,5	14,4	16,1	17,7	19,1
AZ 15	2,4			13,2	15,3	17,1	20,2	21,6	24,2	26,5	28,6
AZ 20	2,8			17,7	20,4	22,8	27,0	28,8	32,2	35,3	38,1
AZ 30	3,6			24,5	30,6	34,2	40,5	43,3	48,4	53,0	57,2
AZ 40	4,0			35,3	40,8	45,6	54,0	57,7	64,5	70,6	76,3
AZ 50	4,4			44,1	51,0	57,0	67,4	72,0	80,6	88,3	95,4

HIGH PRESSURE

TYPE AZ

Contact our Helpline for any special requirements:  
Tel: +44 (0) 151 424 6821  
Fax: +44 (0) 151 495 1043  
e-mail: sales@delavan.co.uk  
Web: www.delavan.co.uk





## SPRAY CHARACTERISTICS

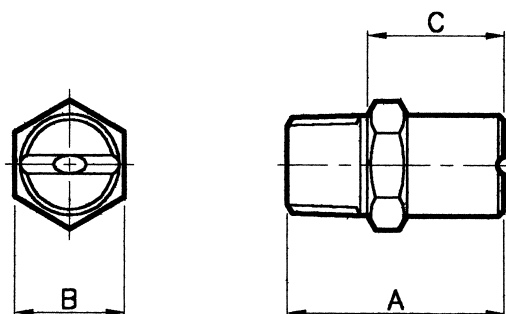
- Uniform distribution of hard hitting flat spray with a minimum of atomization.
- No soft edges - no need for overlapping.
- Minimum flow deviation at varying pressures.
- Available only in 30° spray angle measured @ 10 Bar.G.

## CONSTRUCTION AND MATERIALS

- One piece construction with no internal shoulders or ledges causing unwanted liquid turbulence.
- Available as a Male BSPT pipe thread design only.
- Hexagon body with wrench flats avoid distortion when tightening.
- Circular shaped orifice reduces wear, no feather edges.
- Nozzle filter is not needed, orifice will pass small amounts of foreign matter.
- Manufactured in Stainless Steel and Hardened Stainless Steel as standard.
- Other materials available to special order.

## ORDER EXAMPLE

3/8" BZ 15 Hardened Stainless Steel.



## DIMENSIONS AND WEIGHTS

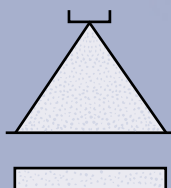
Thread Size	Dimensions (mm)			Weight (g)
	A	B Hex	C	
1/4	29,9	15,3	19	35
3/8	40,0	18,0	25,4	65
1/2	46,1	25,7	31,9	120

Maximum Recommended Pressure: 200 Bar.G.

## CAPACITY CHART

NOZZLE NUMBER	EQUIV ORIFICE DIA. (mm)	BSPT THREAD SIZE			FLOW RATE IN LITRES/MIN AT Bar.G.												
		1/4	3/8	1/2	20	25	30	35	40	50	60	70	80	90	100	110	
BZ 5	1,2				2,97	3,30	3,61	3,88	4,16	4,69	5,14	5,50	5,88	6,24	6,57	6,93	
BZ 8	1,45				5,14	5,74	6,24	6,75	7,21	8,08	8,81	8,54	10,20	10,81	11,31	11,92	
BZ 13	1,85				8,12	9,04	9,87	10,61	11,41	12,83	14,04	15,15	16,16	17,17	18,08	18,99	
BZ 15	2,0				9,74	10,91	11,82	12,73	13,64	15,25	16,67	18,08	19,29	20,40	21,61	22,62	
BZ 20	2,3				12,93	14,44	15,76	16,97	18,18	20,30	22,32	24,04	25,76	27,17	28,79	30,20	
BZ 25	2,5				16,36	18,28	19,90	21,41	22,93	25,65	27,98	30,30	32,32	34,24	36,26	38,08	
BZ 36	3,0				23,63	26,36	28,68	30,91	33,03	37,07	40,40	43,83	46,86	49,09	52,32	54,64	
BZ 38	3,1				24,85	26,97	30,50	33,03	35,25	40,00	43,63	47,27	50,50	53,73	56,46	59,69	
BZ 51	3,7				34,54	38,58	42,22	45,35	48,68	54,24	59,19	64,24	68,38	72,52	76,66	80,30	
BZ 54	3,75				35,05	39,09	42,72	45,96	49,09	55,05	60,60	65,25	69,79	73,93	77,57	81,71	
BZ 78	4,4				51,41	56,96	62,42	67,47	72,11	80,80	89,03	96,35	103,02	109,08	115,14	120,19	
BZ 106	5,0				69,29	77,16	84,44	91,30	97,77	109,08	120,19	129,28	138,37	146,45	154,53	162,61	

Contact our Helpline for any special requirements:  
Tel: +44 (0) 151 424 6821  
Fax: +44 (0) 151 495 1043  
e-mail:sales@delavan.co.uk  
Web:www.delavan.co.uk



## SPRAY CHARACTERISTICS

- Produces highly uniform flat spray at high pressures.
- Maximum impinging force is produced with a minimum loss of energy resulting in higher efficiency.
- Spray pattern has a knife-like cutting edge.
- Normal spray angles of 25° and 32°.
- Orifice is offset 15° to axis of dovetail.

## CONSTRUCTION AND MATERIALS

- Dovetail connection nozzle/body for positive alignment.
- 3 piece design with Male BSPT thread or Welding Nipple body, available in:
- Stainless Steel bodies and cap.
- Mild Steel (Welding Nipple body only.)
- Longer welding nipple bodies available to special order.
- Nozzle is 416 Hardened Stainless Steel.
- Tips, bodies and cap can be ordered separately in different materials.
- Threaded bodies are 3/4" or 1" Male BSPT only.
- Other materials available to special order.



## ORDER EXAMPLE

DD 20-32° Hardened Stainless Steel = Tip Only.

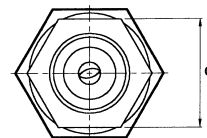
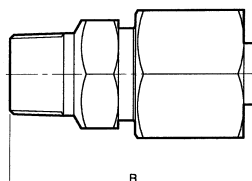
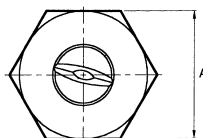
3/4" DDM (Male) 40-25° Stainless Steel = Complete Assembly.

DDW 60-32° Stainless Steel = Welding Assembly.

### DIMENSIONS AND WEIGHTS

Assembly Type	Dimensions (mm)			Weight (g)
	A Hex	B	C Hex	
3/4" DDM	41,3	79,2	38,0	494
1" DDM	41,3	79,2	38,0	551
DDW	41,3	70,0	35,0 dia.	410

Nozzle Height (mm)	Coverage (mm) at 70 Bar.G.	
	25°	32°
200	125	150
225	135	165
250	155	180
275	165	190
300	180	205
325	185	220
350	195	235
400	220	250
450	240	285
500	255	300
550	270	315
600	280	320



Maximum Recommended Pressure: 275 Bar.G.

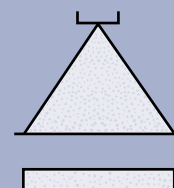
## CAPACITY CHART

NOZZLE NUMBER	Equiv. Orifice Dia. (mm)	FLOW RATE IN LITRES/MIN AT Bar.G. - FOR BOTH 25° AND 32°															
		40	55	70	85	100	110	125	140	150	165	180	195	210	240	275	
DD 6	1,5	8,7	10,2	11,5	12,6	13,7	14,4	15,3	16,2	16,8	17,6	18,4	19	20	21	23	
DD 10	2,0	15	17	19	21	23	24	26	27	28	30	31	32	33	35	38	
DD 12,5	2,2	18	21	24	26	29	30	32	34	35	37	38	40	41	44	47	
DD 15	2,4	22	25	28	31	34	36	39	40	42	44	46	48	49	53	57	
DD 20	2,8	29	34	38	42	45	48	51	54	56	59	61	64	66	71	76	
DD 25	3,2	36	43	48	53	57	60	64	68	70	74	77	80	83	88	94	
DD 30	3,6	43	51	57	63	68	72	78	81	84	88	92	95	99	106	113	
DD 40	4,0	57	68	76	84	91	96	102	109	112	117	122	127	133	141	151	
DD 50	4,4	72	85	95	105	114	119	127	135	140	147	153	159	166	177	189	
DD 60	4,8	86	102	114	127	135	142	152	160	166	174	182	190	198	212	227	

HIGH PRESSURE

TYPE DD

Contact our Helpline for any special requirements:  
Tel: +44 (0) 151 424 6821  
Fax: +44 (0) 151 495 1043  
e-mail:sales@delavan.co.uk  
Web:www.delavan.co.uk





## SPRAY CHARACTERISTICS

- Produces highly uniform flat spray at high pressures.
- Maximum impinging force is produced with a minimum loss of energy resulting in higher efficiency.
- Spray pattern has knife-like cutting edge.
- Normal spray angles of 25° and 32°.
- Orifice insert is offset 15° to axis of dovetail.

## CONSTRUCTION AND MATERIALS

- Dovetail connection nozzle/body for positive alignment.
- 3 piece design with Male NPT thread or Welding Nipple body, available in:
- Stainless Steel bodies and cap.
- Mild Steel (Welding Nipple body only)
- Longer Welding Nipple bodies available to special order.
- Nozzle is Stainless Steel with Tungsten Carbide orifice insert.
- Tips, bodies and cap can be ordered separately in different materials.
- Threaded bodies are 3/4" or 1" Male NPT only.
- Other materials available to special order.

## ORDER EXAMPLE

DQ 20-32° = Tip Only.

3/4" DQM 40-25° Stainless Steel = Complete Assembly.

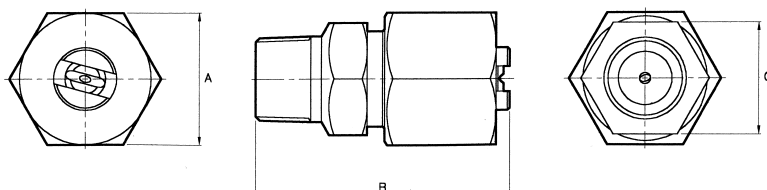
DQW 60-32° Stainless Steel = Welding Assembly.

**Note:-** This nozzle type is also available as the DE type design with strainer and flow stabiliser.

## DIMENSIONS AND WEIGHTS

Assembly Type	Dimensions (mm)			Weight (g)
	A Hex	B	C Hex	
3/4" DQM	41,3	79,2	38,0	504
1" DQM	41,3	79,2	38,0	561
DQW	41,3	70,0	35,0 dia.	420

Nozzle Height (mm)	Coverage (mm) at 70 Bar.G.	
	25°	32°
200	125	150
225	135	165
250	155	180
275	165	190
300	180	205
325	185	220
350	195	235
400	220	250
450	240	285
500	255	300
550	270	315
600	280	320

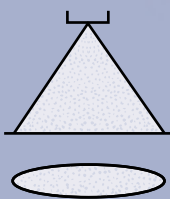


Maximum Recommended Pressure: 275 Bar.G.

## CAPACITY CHART

Nozzle Number	Equiva. Orifice Dia. (mm)	FLOW RATE IN LITRES/MIN AT Bar.G. - FOR BOTH 25° AND 32°														
		40	55	70	85	100	110	125	140	150	165	180	195	210	240	275
DQ 6	1,5	8,7	10,2	11,5	12,6	13,7	14,4	15,3	16,2	16,8	17,6	18,4	19	20	21	23
DQ 10	2,0	15	17	19	21	23	24	26	27	28	30	31	32	33	35	38
DQ 12,5	2,2	18	21	24	26	29	30	32	34	35	37	38	40	41	44	47
DQ 15	2,4	22	25	28	31	34	36	39	40	42	44	46	48	49	53	57
DQ 20	2,8	29	34	38	42	45	48	51	54	56	59	61	64	66	71	76
DQ 30	3,6	43	51	57	63	68	72	78	81	84	88	92	95	99	106	113
DQ 40	4,0	57	68	76	84	91	96	102	109	112	117	122	127	133	141	151
DQ 50	4,4	72	85	95	105	114	119	127	135	140	147	153	159	166	177	189
DQ 60	4,8	86	102	114	127	135	142	152	160	166	174	182	190	198	212	227
DQ 70	5,2	102	117	132	144	155	167	178	189	197	204	212	219	231	246	265

Contact our Helpline for any special requirements:  
Tel: +44 (0) 151 424 6821  
Fax: +44 (0) 151 495 1043  
e-mail:sales@delavan.co.uk  
Web:www.delavan.co.uk



## SPRAY CHARACTERISTICS

- Produces a uniform flat fan shaped pattern.
- Requires minimal overlapping to produce an even distribution when used in multiple nozzle system.
- High pressure body design with replaceable insert.
- A wide range of flow rates and spray angles.
- 0° nozzle sizes available on request.
- Orifice offset -5° to axis of dovetail.

## CONSTRUCTION AND MATERIALS

- Dovetail connection nozzle/body for positive alignment.
- 3 piece construction. Body, tip and cap.
- The tip is dovetailed for self alignment.
- The orifice insert is manufactured in Tungsten Carbide for maximum wear resistance at higher pressures.
- The high pressure body, cap and orifice housing are manufactured in Stainless Steel as standard.
- Standard Male and Female thread bodies are available and also an optional welding body.



## ORDER EXAMPLE

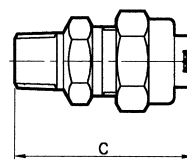
LQ 4 - 65° = Tip Only.

1/4" LQM (Male) 8 - 40° = Complete Assembly.

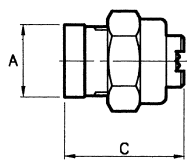
LQW 2 - 65° = Welding Assembly.

### DIMENSIONS AND WEIGHTS

Thread Size	Assembly Type	Dimensions (mm)			Weight (g)
		A Hex	B Hex	C	
1/8	LQF	18,0	20,8	43,0	65
1/4	LQF	18,0	20,8	43,0	64
1/4	LQM	18,0	20,8	43,0	57
3/8	LQF	20,8	20,8	43,0	65
3/8	LQM	18,0	20,8	43,0	59
-	LQW	17,5 dia.	20,8	29,2	46



LQ (MALE) ASSEMBLY



LQ (WELDING) ASSEMBLY Maximum Recommended Pressure: 350 Bar.G.

## CAPACITY CHART

NOZZLE NUMBER	Equiv. orifice size (mm)	FLOW RATE IN LITRES/MIN AT Bar.G.								SPRAY ANGLES (°) @ 70 Bar.G.					
		35	50	70	100	140	210	280	350	25	40	50	65	80	95
LQ 0,5	0,45	0,68	0,81	0,94	1,14	1,36	1,66	1,92	2,15						
LQ 0,6	0,51	0,75	0,89	1,06	1,26	1,51	1,84	2,13	2,38						
LQ 0,7	0,53	0,90	1,07	1,25	1,52	1,78	2,18	2,51	2,81						
LQ 0,8	0,61	1,14	1,36	1,59	1,92	2,27	2,78	3,21	3,59						
LQ 1,0	0,66	1,32	1,57	1,89	2,23	2,63	3,22	3,71	4,15						
LQ 1,25	0,74	1,70	2,03	2,38	2,87	3,39	4,15	4,79	5,36						
LQ 1,5	0,79	2,00	2,39	2,83	3,38	3,97	4,86	5,61	6,27						
LQ 2,0	0,91	2,68	3,20	3,78	4,53	5,29	6,47	7,48	8,36						
LQ 2,5	1,04	3,33	3,98	4,54	5,62	6,62	8,10	9,36	10,4						
LQ 3,0	1,09	4,16	4,97	5,67	7,03	7,94	9,72	11,2	12,5						
LQ 3,5	1,22	4,54	5,42	6,44	7,67	9,46	11,5	13,3	14,9						
LQ 4,0	1,32	5,30	6,33	7,57	8,95	10,5	12,8	14,8	16,6						
LQ 6,0	1,57	7,95	9,50	11,3	13,4	15,8	19,3	22,3	24,9						
LQ 8,0	1,83	10,6	12,6	15,1	17,9	21,1	25,8	36,4	33,3						
LQ 11,5	2,16	15,5	18,5	21,6	26,2	30,6	37,4	43,2	48,3						

HIGH PRESSURE

TYPE LO

Contact our Helpline for any special requirements:  
Tel: +44 (0) 151 424 6821  
Fax: +44 (0) 151 495 1043  
e-mail: sales@delavan.co.uk  
Web: www.delavan.co.uk

